

## NEOREST RH Dual Flush Toilet, 1.0GPF/0.8GPF

### FEATURES

- TORNADO FLUSH® siphon jet flushing system, ultra high-efficiency (1.0GPF/3.8LPF and 0.8GPF/3.0LPF).
- CEFIONTECT® ceramic glaze minimizes debris and mold from sticking to porous, ceramic surfaces
- Auto open/close lid; auto flush
- Multifunction remote control
- Heated seat with temperature control
- Universal Height
- EWATER+®
- WASHLET® with three wash modes (front, rear, soft)
- Adjustable spray position
- Oscillating and pulsating comfort washing
- Energy saver timer
- Built-in air purifying system
- Night light
- ADA Compliant
- Back-up manual flush
- Adjustable heated seat
- Programmable energy saver system

### COMPONENTS

- SN988M - Top Unit
- CT989CUMFG - Elongated Bowl Unit

### OPTIONAL COMPONENTS

- THU9660 - Water Supply Extension Kit (sold separately)

### COLORS/FINISHES

- #01 Cotton
- #12 Sedona Beige

### PRODUCT SPECIFICATION

The NEOREST RH with the TORNADO FLUSH system toilet shall be 1.0GPF/3.8LPF and 0.8 GPF/3.0 LPF. Toilet shall have CEFIONTECT ceramic glaze. Toilet shall be of skirted design, elongated front bowl with auto open and close seat. Toilet shall be **TOTO Model MS988CUMFG\_\_\_\_\_.**



- 1G** 1 Gallon per Flush
- TORNADO FLUSH**
- EWATER+**
- CEFIONTECT**
- U** Universal Height

### CODES/STANDARDS

- Meets and exceeds ASME A112.4.2, ASME A112.19.2/CSA B45.1, ASME A112.18.1/CSA B125.1, UL 1431, CSA C22.2 # 68
- Certifications: IAPMO(cUPC), State of Massachusetts, City of Los Angeles and others
- Code Compliance: UPC, IPC, NSPC, and others
- ADA Compliant
- Complies with CA Prop 65 warning requirements



# MS988CUMFG

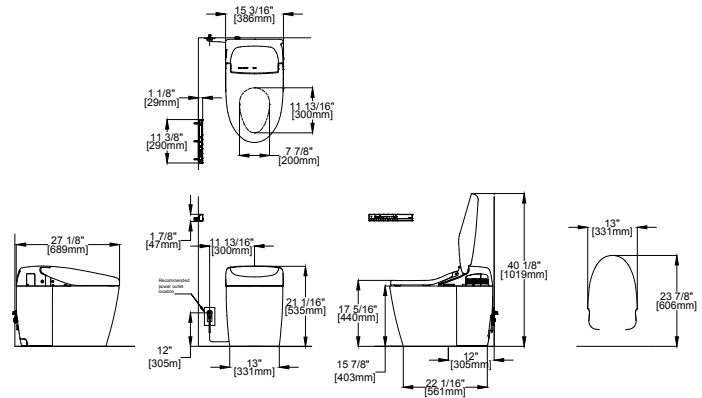
## NEOREST® RH Dual Flush Toilet, 1.0GPF/0.8GPF

### SPECIFICATIONS

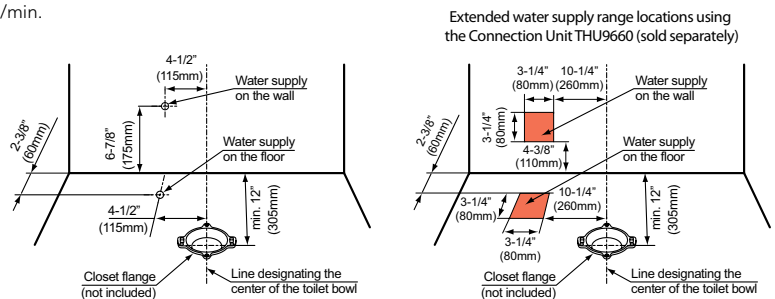
Water Use:	1.0 GPF/3.8 LPF & 0.8 GPF/3.0 LPF
Flush System:	TORNADO FLUSH Siphon Jet
Water Pressure:	Min 7.25 PSI (0.05MPa) Flowing Max 108.75 PSI (0.75MPa) static
Water Surface:	8-3/4" x 7-1/14"
Trap Diameter:	2-1/8" (54 mm)
Rough In:	12" rough in Warning: If there is a base board in the restroom, the center of the floor drain should be a minimum of 12" from the base board.
Trap Seal:	2-1/8" (54 mm)
Warranty:	Three Year Limited (Residential) One Year Limited (Commercial)
Material:	Bowl: Vitreous china Seat and cover: Plastic
Shipping Weight:	Top Unit - SN988M 18.7lbs Bowl Unit - CT989CUMFG 80 lbs
Shipping Dimensions:	SN988M - 31" x 17-3/4" x 11 5/16" CT989CUMFG - 16-1/2" x 21-1/2" x 29-1/2"

### INSTALLATION NOTES

- For use with potable water only. Do not use with recycled water.



SPECIFIC	Power Rating	120V AC, 60Hz, 1290W
	Power Cord	Maximum length: 3.94ft (120cm)
Water Feature	Water Feature	Adjustable Water Flow Rate
		Rear washing: from .08 to .11 gal/min.
		Soft washing: from .08 to .11 gal/min.
		Front washing: from .08 to .11 gal/min.
Drying Feature	Temperature of Washing Spray	Minimum: 86° F/30° C Maximum: 104° F/40° C
	Safety Features: Thermal fuse	Air Temperature: High: About 140°F (60°C) Low: About 95°F (35°C)
Seat Warming Feature	Capacity of Air:	10.24 ft³/min
	Safety Feature: Thermal fuse	Surface Temperature: Minimum: 82°F (28°C) Maximum: 97°F (36°C)
Air Purifying Feature	Seat Heater Capacity:	50W
	Safety Feature: Thermal fuse	
Ambient Temperature Range	Air Purifying Feature	Method: O <sub>3</sub> Deodorizer Air Volume: 5.7 ft³/min
	Size	32°F (0°C) to 104°F (40°C)
Weight	Weight	Net: 90 lbs.



These dimensions and specifications are subject to change without notice